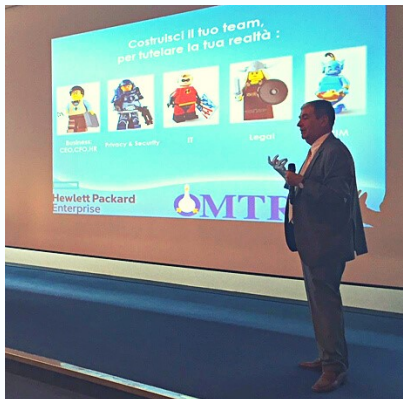
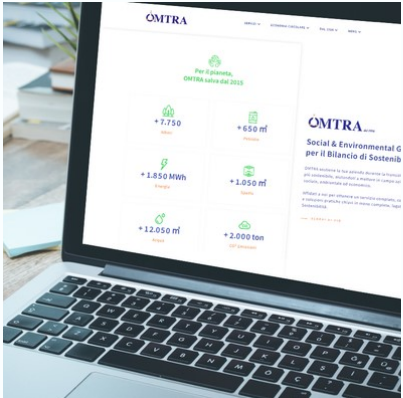
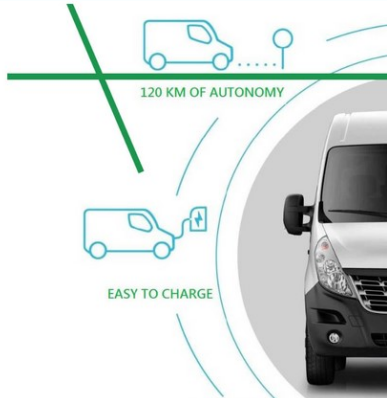


# Circular Economy Solutions for ITAD: Reuse, donation & recycle



# INDEX

- OMTRA's history, certifications and services
- Data on and risks of e-waste
- Composition of electronic devices
- E-waste opportunities
- Recycling process for electronic devices
- OMTRA's ITAD procedures
- OMTRA and sustainability: from inside to outside

# History of OMTRA

SINCE 1956...



**1956**

OMTRA Società Benefit was born from the intuition of Silvio Spadoni, who introduced external logistics for multinationals in Italy.

**1979**

It is the first company to introduce external archives for companies in Italy with European and American ethics and standards.

**1993**

Giorgio Spadoni, CEO of OMTRA, becomes member of Arma and i-Sigma, and in the international committee for the new Information Governance Standards.

**2004**

Giorgio Spadoni becomes VP for Transport, Logistics and Infrastructures, and member of the Board of Directors of Assolombarda.

**2008**

Giovanna Spadoni, General Manager of OMTRA, after field studies in the USA and Ireland, offers advice on Information Governance, Secure Destruction and Digital Transformation.



...TO TODAY

**2019**

Giovanna becomes a member of the Board of i-Sigma International and is elected as the best active member of the year.

**2021**

OMTRA becomes a Benefit Company and launches a process aimed at corporate social responsibility and environmental sustainability.

**2022**

Giovanna, re-elected Member of the Board of iSigma, and Giorgio, give three speeches about sustainability in panel discussions at the annual Conference in the USA

**2023**

OMTRA creates an ESG+S (ESG + Security) Team to serve itself, companies and the local and international community with new and innovative services.



OMTRA Confidential Document



# ESG CERTIFICATIONS

**Our company has sustainability at heart:**

Starting by measuring the impact of our services, OMTRA designed and implemented new, innovative and regenerative processes for the environment and the community.



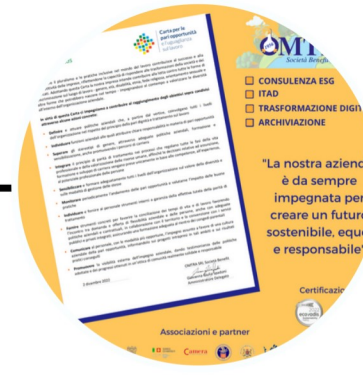
**2021**

OMTRA becomes a **Benefit Company** and solidifies its commitment to society and the environment in its corporate statute



**2022**

OMTRA obtains **EcoVadis** Certification, that judges the company's ESG efforts in its supply chain and business partners



**2022**

OMTRA adheres to the **Italian Charter for Equal Opportunities**, joining an EU-wide network of companies committed to encouraging diversity and reducing inequalities.



**2023**

OMTRA becomes **B Corp certified**, with a **final score of 95.2** (above the Italian and European averages), the first company in its industry.



OMTRA Confidential Document



# OVERALL B IMPACT SCORE



**IMPACT AREA** **SCORE**

**Workers 24.5**

Workers evaluates a company's contributions to its employees' financial security, health & safety, wellness, career development, and engagement & satisfaction. In addition, this section recognizes business models designed to benefit workers, such as companies that are at least 40% owned by non-executive employees and those that have workforce development programs to support individuals with barriers to employment.



**IMPACT AREA** **SCORE**

**Environment 31.0**

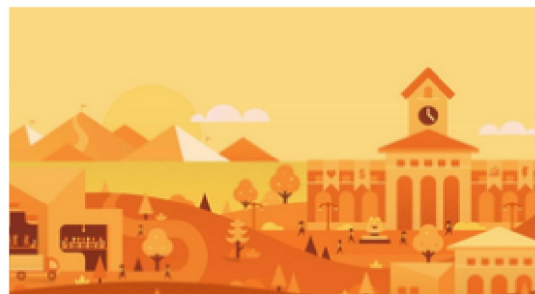
Environment evaluates a company's overall environmental management practices as well as its impact on the air, climate, water, land, and biodiversity. This includes the direct impact of a company's operations and, when applicable its supply chain and distribution channels. This section also recognizes companies with environmentally innovative production processes and those that sell products or services that have a positive environmental impact. Some examples might include products and services that create renewable energy, reduce consumption or waste, conserve land or wildlife, provide less toxic alternatives to the market, or educate people about environmental problems.

Based on the B Impact assessment, OMTRA S.r.l. Società Benefit earned an overall score of 95.2.

The median score for ordinary businesses who complete the assessment is currently 50.9.



- 95.2 Overall B Impact Score
- 80 Qualifies for B Corp Certification
- 50.9 Median Score for Ordinary Businesses



**IMPACT AREA** **SCORE**

**Governance 17.0**

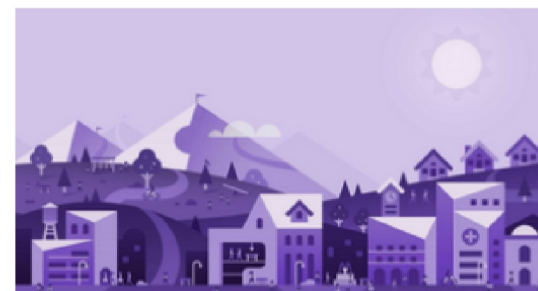
Governance evaluates a company's overall mission, engagement around its social/environmental impact, ethics, and transparency. This section also evaluates the ability of a company to protect their mission and formally consider stakeholders in decision making through their corporate structure (e.g. benefit corporation) or corporate governing documents.



**IMPACT AREA** **SCORE**

**Customers 3.9**

Customers evaluates a company's stewardship of its customers through the quality of its products and services, ethical marketing, data privacy and security, and feedback channels. In addition, this section recognizes products or services that are designed to address a particular social problem for or through its customers, such as health or educational products, arts & media products, serving underserved customers/clients, and services that improve the social impact of other businesses or organizations.



**IMPACT AREA** **SCORE**

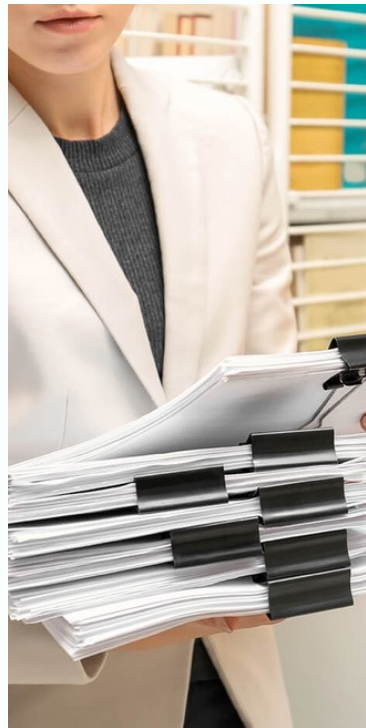
**Community 18.5**

Community evaluates a company's engagement with and impact on the communities in which it operates, hires from, and sources from. Topics include diversity, equity & inclusion, economic impact, civic engagement, charitable giving, and supply chain management. In addition, this section recognizes business models that are designed to address specific community-oriented problems, such as poverty alleviation through fair trade sourcing or distribution via microenterprises, producer cooperative models, locally focused economic development, and formal charitable giving commitments.

# OUR SERVICES



ITAD: IT Reuse  
& Recycle



ESG + S  
Advisory



Current and  
historic  
archiving



Certified  
Destruction



Cyber Security  
& Tape  
Vaulting

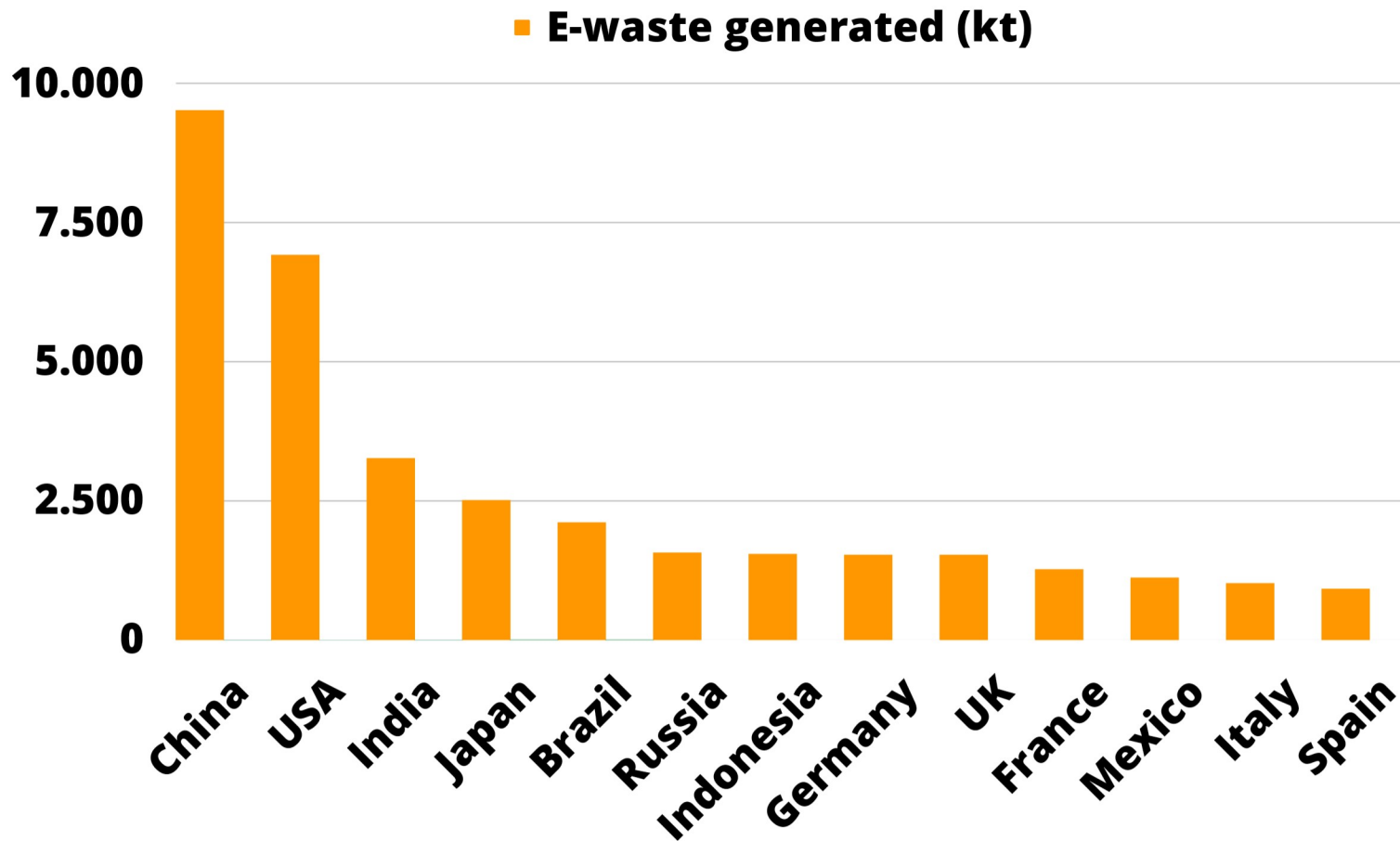


Digital  
Transformation



# DATA ON E-WASTE

According to the latest data of the Global Waste Monitor (a UN initiative), in **2019** around **53,6 million tons** of E-waste were generated globally, a number that according to predictions is destined to **increase to 74,7 million in 2030** and **110 million in 2050**.



E-waste produced annually:

-  China: around 9.5 mt
-  USA: around 7 mt
-  Italy: around 1.2 mt

R. Ahirwar and A.K. Tripath



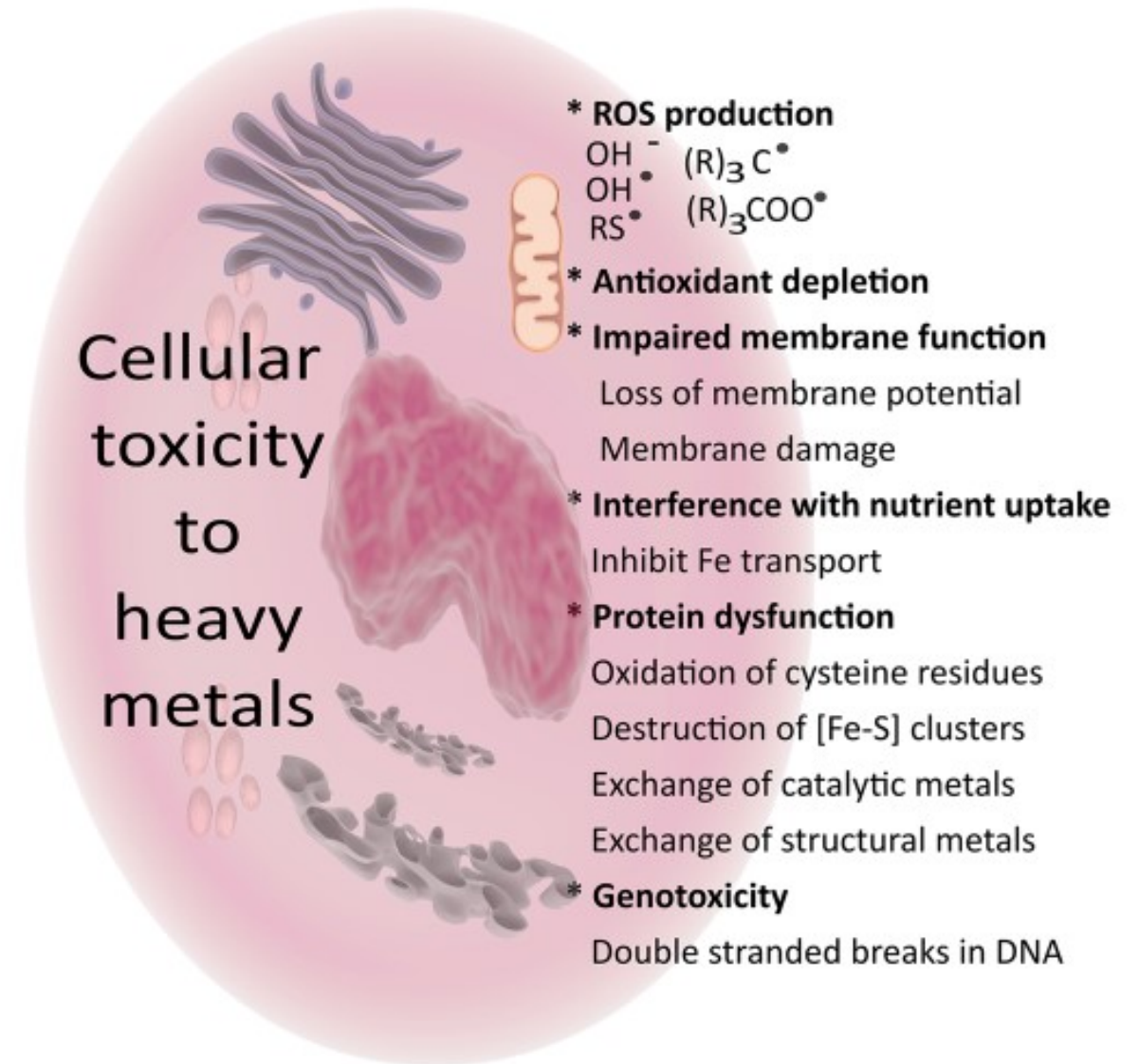
# RISKS OF E-WASTE

E-waste can be a source of **toxic substances**, such as:

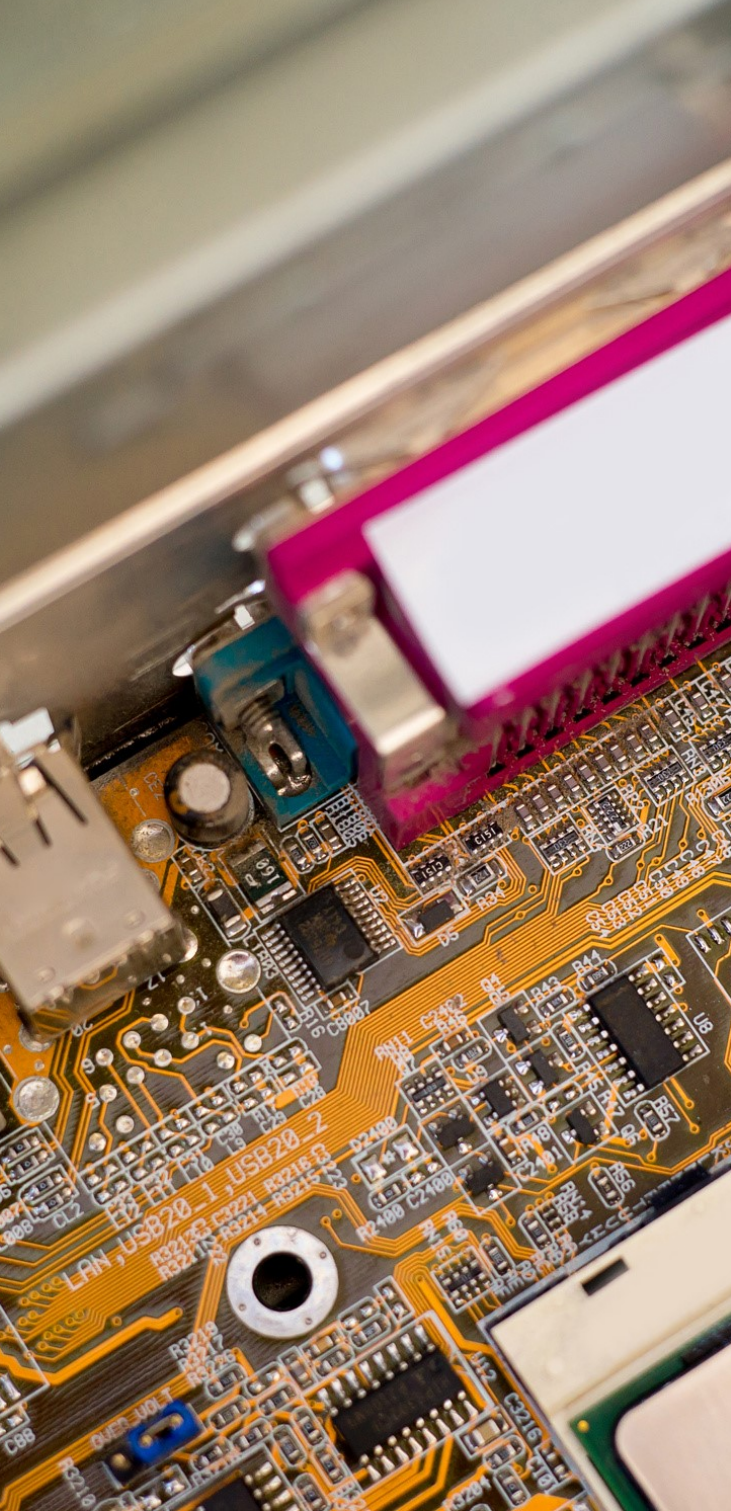
- **Heavy metals**, such as mercury (Hg), cadmium (Cd), arsenic (As), chromium (Cr), thallium (Tl), and lead (Pb); and
- **Persistent organic pollutants**, including polycyclic aromatic hydrocarbons (PAHs), polychlorinated biphenyls (PCBs), brominated flame retardants (BFRs), etc.

E-waste dumped in landfills **pollutes the environment** through **leaching into soil and groundwater**.

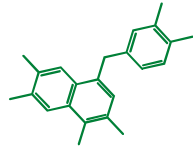
Incineration creates **emissions** into the surrounding **air, soil, and surface water**, ultimately **affecting human health**.



**Fig. 2.** Toxicological mechanisms of heavy metals in humans. Exposure to heavy metals result in generation of reactive oxygen species (ROS) which may lead to depletion of antioxidants, alteration of enzyme and protein function, damage to the cell membrane, interference in the activity of transporters and genotoxicity.

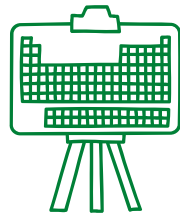


# COMPOSITION OF E-DEVICES



From a material design perspective, electronic equipment is very complex and composed of many parts.

**Up to 69 elements** from the periodic table can be found in such devices, including:



- **Precious metals** (e.g. **gold, silver, copper, platinum, palladium, ruthenium, rhodium, iridium, and osmium**),
- **Critical Raw Materials (CRM)** (e.g. **cobalt, palladium, indium, germanium, bismuth, and antimony**), and
- **Non-Critical Metals**, such as **aluminium and iron**.



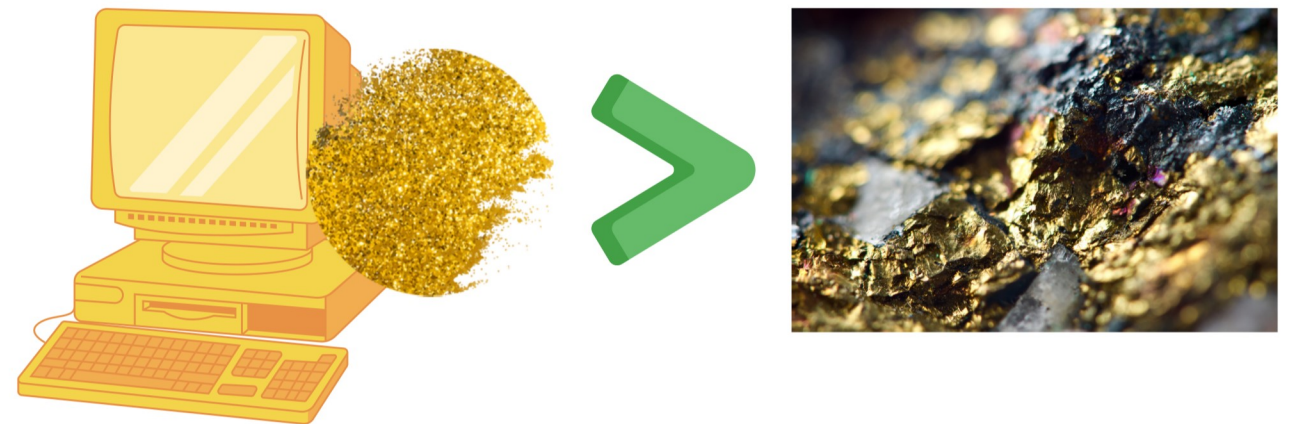
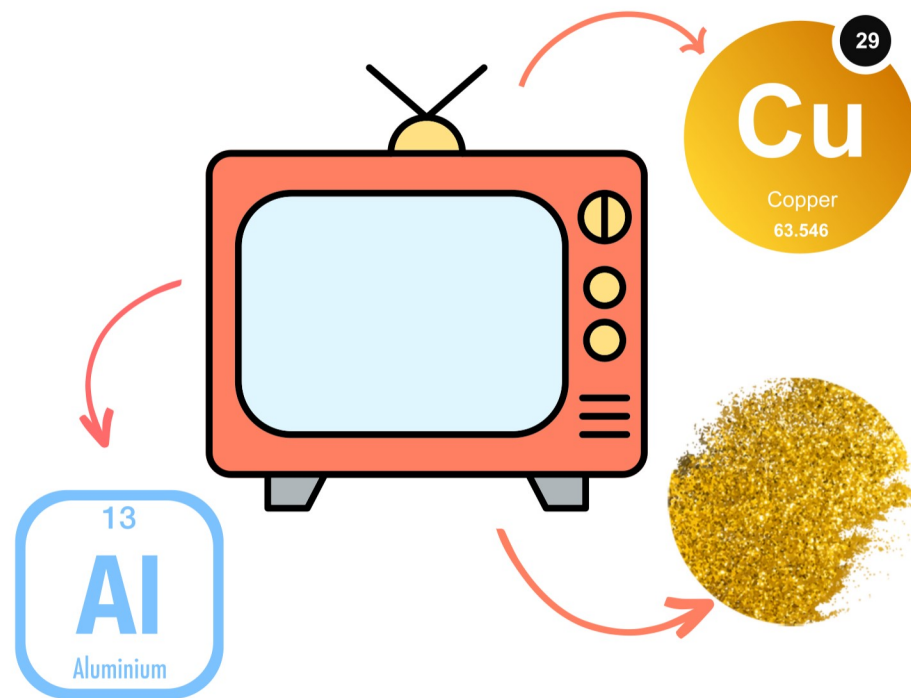
The materials used can be recovered by **recycling processes** to reuse in future production, as valuable raw materials.



# E-WASTE OPPORTUNITIES

**Metal, plastic, glass and rare earth elements** in e-waste are valuable secondary resources.

- A typical cathode-ray tube contains approx. **450 g of Cu, 227 g of Al and 5.6 g of Au**
- A metric ton of **personal computers** may contain **more gold** than that recovered from 17 metric tons of **gold ore**





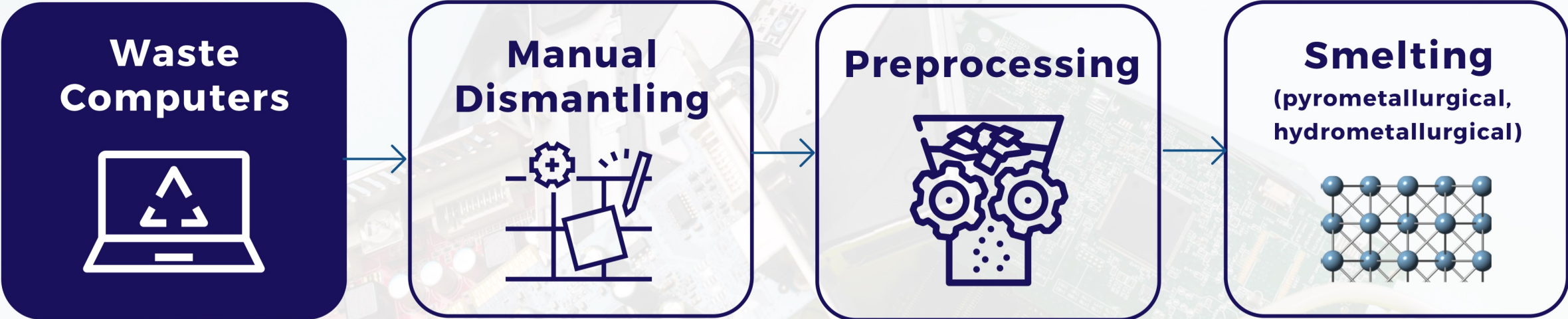
# TOKYO 2020 OLYMPIC MEDALS: MADE FROM E-WASTE

A total of **78,985 tons** of **discarded electronic devices** were collected, including approximately **6.21 million used mobile phones**, along with **digital cameras**, **handheld games** and **laptops**, all of which were **dismantled** and **melted down** by highly trained contractors.

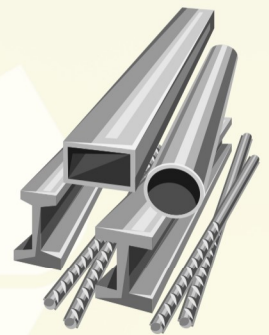
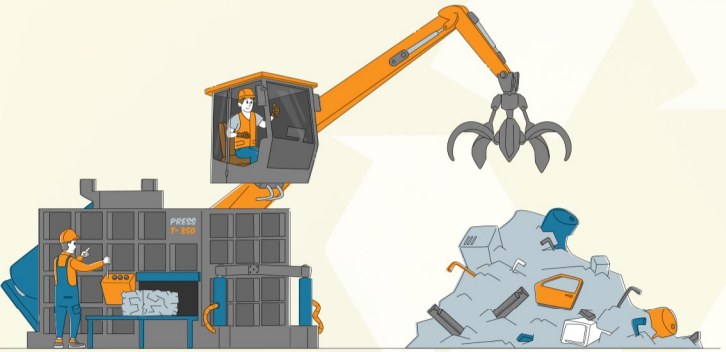
A total of **30.3kg** of **gold**, **4,100kg** of **silver** and **2,700kg** of **bronze** were reused!



# THE RECYCLING PROCESS

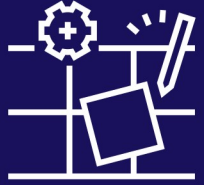


↓  
Metal Recycling

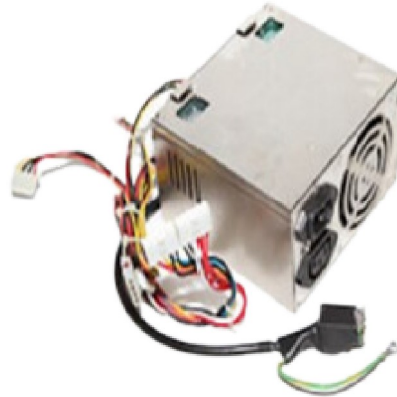




# 01. Manual Dismantling



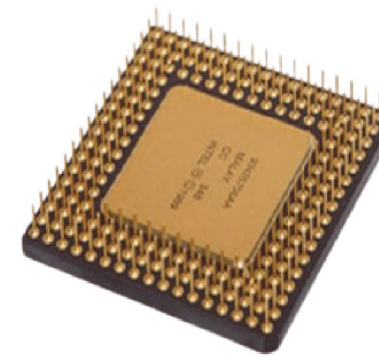
**Inside of a desktop casing**



**Power Supply box**



**Motherboard**



**CPU (Intel pentium)**



**Memory modules**

## Material composition of dismantled desktop (Kida, 2010)

No	Name of component	Weight (g)	Weight (%)
No 1	Metal (Outer frames)	6571	49.8
No 2	Plastic	306	2.3
No 3	Screws	44	0.3
No 4	Mother board 1	564	4.3
No 5	Mother board 2	253	1.9
No 6	Graphics card	109	0.8
No 7	Memory Module (2 pieces)	2595	19.7
No 8	CPU	251	1.9
No 9	CD drive	338	2.6
No 10	Floppy drive	463	3.5
No 11	Hard drive	461	3.5
No 12	Wires	104	0.8
No 13	Power boards	1146	8.7
Total		13205	100.0



**PCI card**



**CD/DVD drive**



**Floppy disk drive**



**Hard drive**



**Cables**



**Heat sink with fan**

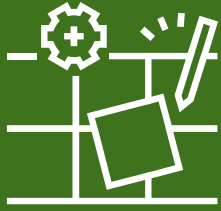


**Connectors**



# 02.

## Preprocessing



**Particles (<5mm)**

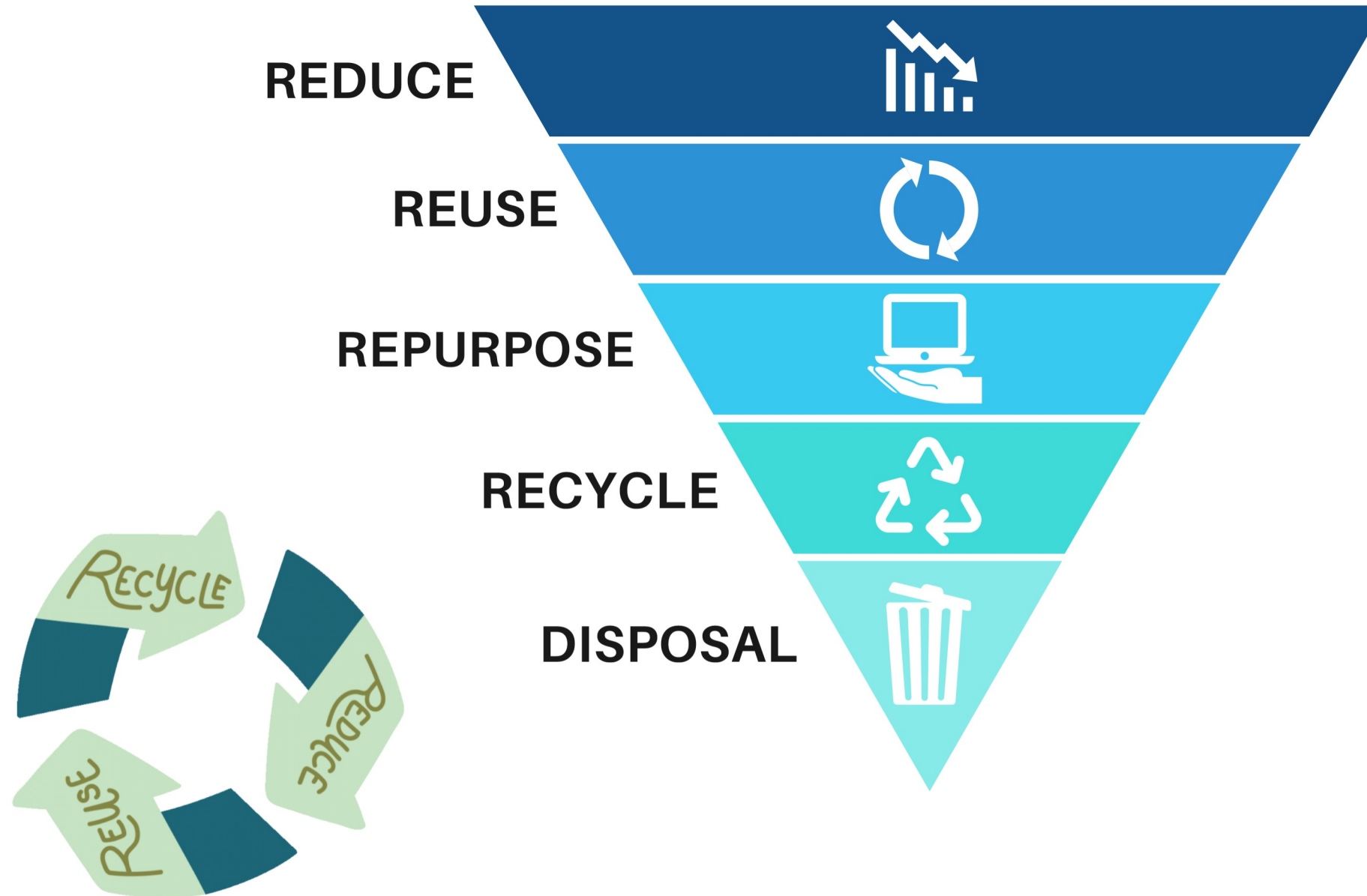
→ **Ferrous metals**

→ **Big size nonferrous metals (>5mm)**

→ **Nonferrous metals (<5mm)**

→ **Plastics, resins**

# OMTRA'S ITAD HIERARCHY



# OMTRA'S PROCEDURE

## E-WASTE



**Reuse**

collect

choose  
TO  
REUSE

test

wipe

sell or donate

**Recycle**

collect



test

**dismantle**  
(separate hazardous components following safety guidelines)

recycle



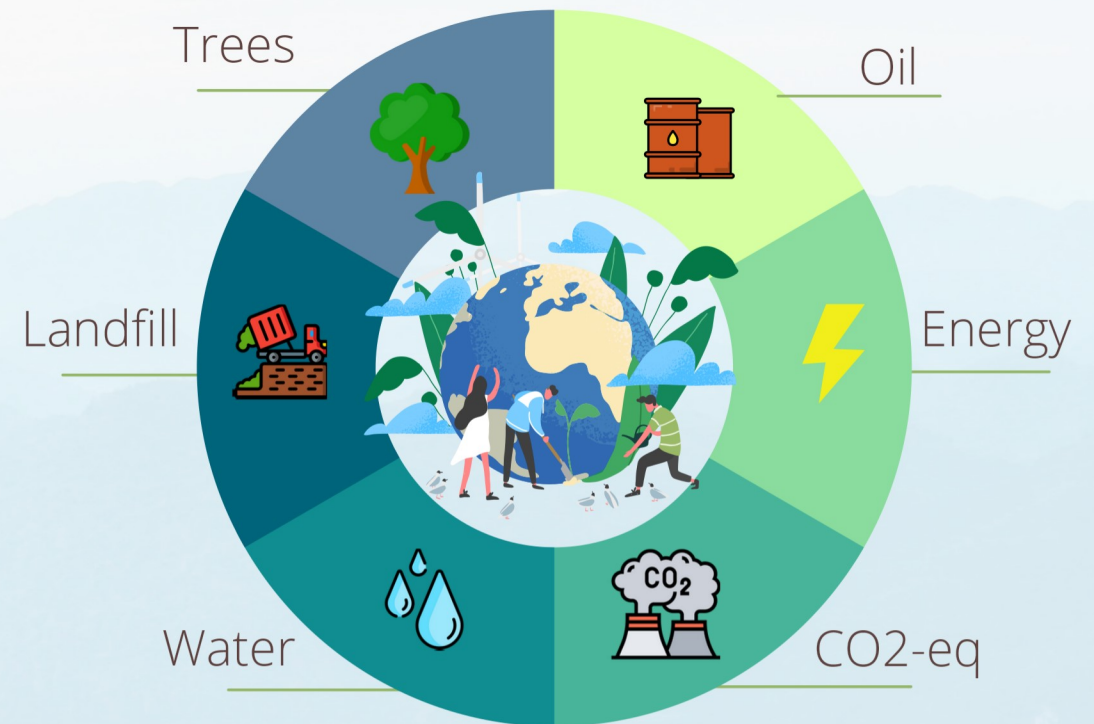
# GREEN REPORT

The Green Report indicates the positive impact of reused and recycled IT materials on our planet, in terms of safeguarding the ecosystem.

Drafted by our Circular Economy Manager, the Green Report translates the **positive environmental effects** into indicators of immediate understanding (eg: quantity of trees, m<sup>3</sup> of water, CO<sub>2</sub> emissions, landfill space, etc.).

The Green Report is supplied together with our attestation of destruction and/or certification of data erasure, and is useful for enriching the Annual Financial Report, EU-mandated **Non-Financial Declarations**, and **Sustainability Reports** and **Benefit Company Impact Reports**.

**By recycling, you saved...**





# OMTRA'S EFFORTS TOWARDS THE COMMUNITY

Since its foundation over 65 years ago, OMTRA Società Benefit has always had the welfare of the community at heart, giving jobs in the past to 30+ people with difficulties lacking employment.

OMTRA believes that companies play a key role in the process of creating social value within cities and communities.

Our efforts have been made concrete, with the following examples recognized by the press over several decades.



## Un impegno concreto per il pianeta e per la comunità

**OMTRA È LA PRIMA SOCIETÀ BENEFIT DI LAINATE!**

6 a metà novembre 2021, Italia risale solo al 2016, è la prima volta

da è rimasta a gestione familiare, passando nelle mani del figlio Giorgio e, successivamente, della nipote Giovanna, che hanno portato avanti il lavoro con passione, ampliando il business.

**Qualche esempio di attività?** Si va dalla trasformazione digitale, all'archiviazione fisica e digitale, ma anche Caveaux per foto, documenti storici e libri e materiale informatico, Self-service Storage, Sustainability strategy & reporting... Il tutto certificato e con software, procedure e standard USA. Il bene che distribuisce sul territorio per OMTRA è un impegno concreto da anni (e ora lo ha formalizzato diventando SB) inserendo, formando e accompagnando persone fragili in percorsi di autonomia e riabilitazione. Un modo per restituire un pezzo del proprio valore alla comunità.

**Società Benefit: cosa significa?** Le Società Benefit (SB) sono aziende che si impegnano concretamente a creare un impatto positivo sulla società e sull'ambiente. La responsabilità sociale e la sostenibilità ambientale rappresentano valori così importanti per farci da diventare scopi, parte dello sviluppo societario. Le Società Benefit, infatti, non agiscono solo per soddisfare gli interessi economici degli stakeholder principali (come soci e azionisti), ma si pongono l'obiettivo di contribuire al benessere della collettività e dell'am-



## L'esperienza Omtra al convegno sulla responsabilità sociale delle aziende «Offriamo un lavoro agli ex carcerati»

**MONZA** — «Cinque ex tossicodipendenti e carcerati hanno lavorato da me per tre anni. Sia da un punto di vista umano che professionale, è stata un'esperienza più che positiva». Giorgio Spadolini, 50 anni, titolare di Omtra (12 dipendenti), ditta di Cusano Milanino, è l'esempio vivente che profitto e solidarietà possono andare a braccetto. E che, in fondo, la responsabilità sociale d'impresa non è solo teoria.

Di meglio non poteva chiedere, il convegno organizzato ieri pomeriggio sul tema dall'Associazione Industriali di Monza e della Brianza, al quale hanno partecipato anche il ministro del Welfare, Roberto Maroni, il presidente della Camera di Commercio di Milano, Carlo Sangalli e l'assessore regionale alla Famiglia e alla solidarietà sociale, Giancarlo Abelli.

Incontro degli imprenditori brianzoli con il ministro del Welfare

Valli, presidente di Aimb — In cambio possono ricevere sicuramente soddisfazione morale, ma anche qualche vantaggio concreto» — Il gruppo dei giovani industriali di Monza e Brianza, presieduto da Andrea Dell'Orto, ha avviato un progetto specifico per le aziende brianzole.

L'obiettivo è di fare un salto culturale, spiegando cos'è la responsabilità sociale d'impresa e, in seconda battuta, di applicare nel concreto la solidarietà. «Gli esempi di Omtra, Star e Peg Perego sono senza dubbio illuminanti», prosegue Dell'Orto. «Ce ne sono molti altri ed è su questa strada che dobbiamo proseguire se vogliamo migliorare la qualità del lavoro e, di conseguenza, anche quella dei prodotti». Il ministro Maroni ha tuttavia messo in guardia gli industriali di brianzoli contro:



IN FABBRICA Il deposito della Omtra a Cusano Milanino

## ECONOMIA DI FRONTIERA

Il lavoro aiuta a ritrovare la dignità persa

**di MONZA SERENA RILLA**

**R**iprendente. Alle spalle della famiglia mi- lanese, è stato facile. La spaccatura è venuta dalla comunità che gli ha fatto da contrappeso. Giorgio Spadolini, presidente di Omtra, una società di logistica e archiviazione per conto terzi, con sede a Cusano Milanino. Con altri frangenti del suo gruppo è stato assorbito da una società di nome "Omtra", presieduta da Giorgio Spadolini — poi è venuta fuori la notizia che il gruppo era stato acquistato da un investitore cinese. «In 20 anni sono passati da un'azienda familiare a una società quotata in Borsa», dice Spadolini. «Ma il gruppo è sempre stato guidato da me e da mio figlio». In 20 anni sono passati da un'azienda familiare a una società quotata in Borsa, dice Spadolini. «Ma il gruppo è sempre stato guidato da me e da mio figlio».



CORRIERE DELLA SERA 48 GIOVEDÌ 3 OTTOBRE 1991

## FASCICOLI A MASSA / Viaggio nei capannoni dove è custodita la memoria storica della burocrazia imprenditoriale

### Il fortino delle carte top-secret

In un archivio bunker si conservano i documenti riservati di enti pubblici e aziende private



gli enormi capannoni di viale dell'Industria, nata nel 1956, è a struttura familiare e impiega 30 dipendenti di cui solo 6 gestiscono lo scordato archivio. «Qui ci sono documenti riservati, i fascicoli personali dei dipendenti, i fascicoli pubblicitari di centinaia di imprese», spiega con orgoglio il giovane imprenditore. Il 20 per cento dello spazio è occupato dai tabulati perché, nonostante i proclami dell'informatica, nessuno si è mai occupato di digitalizzare i documenti. Per correre un lungo corridoio tra scaffali dove alcune targhette indicano i numeri di note aziende. Su un bancone di legno, un fascicolo è aperto e si legge: «Nel vivano sulla carta», dice l'amministratore delegato dell'Omtra, Giorgio Spadolini, 37 anni, una laurea in lingue e una sua grande passione: la lettura di documenti.

Il cliente avesse bisogno di un documento? «Nessun problema», assicura Giorgio Spadolini — basta una telefonata e nel giro di pochi minuti una fattura o un contratto arrivano via fax, in ufficio. «Fascicoli polverosi, cartelle disordinatamente allineate negli armadi o sulle cantine sono preservati dall'Omtra», ordina il titolare. «La segretezza e la discrezione sono la nostra legge», dice Spadolini — perché tra queste mura sono custoditi migliaia di documenti riservati. E indica alcune voluminose cartelle di una grande azienda che ha chiesto di mettere le mani nel caso dei fascicoli del Puzano di giustizia di molti enti pubblici, spiega, come è facile.

comprendere l'accesso solo al cliente. «Studiati e ricercati dovrebbero eventualmente essere chiesti, il permesso alle aziende. Dunque, si fa di tutto e di più», sottolinea Giorgio Spadolini. «E non nasconde un suo grande sogno: mettere le mani nel caso dei fascicoli del Puzano di giustizia di molti enti pubblici», spiega, come è facile.

Giuseppe Altamore



OMTRA Confidential Document



# OUR ITAD MISSION

We want to **raise awareness** about the problem of e-waste, creating a **cultural shift** to promote the **reuse and recycling** of electronic devices with our innovative services.

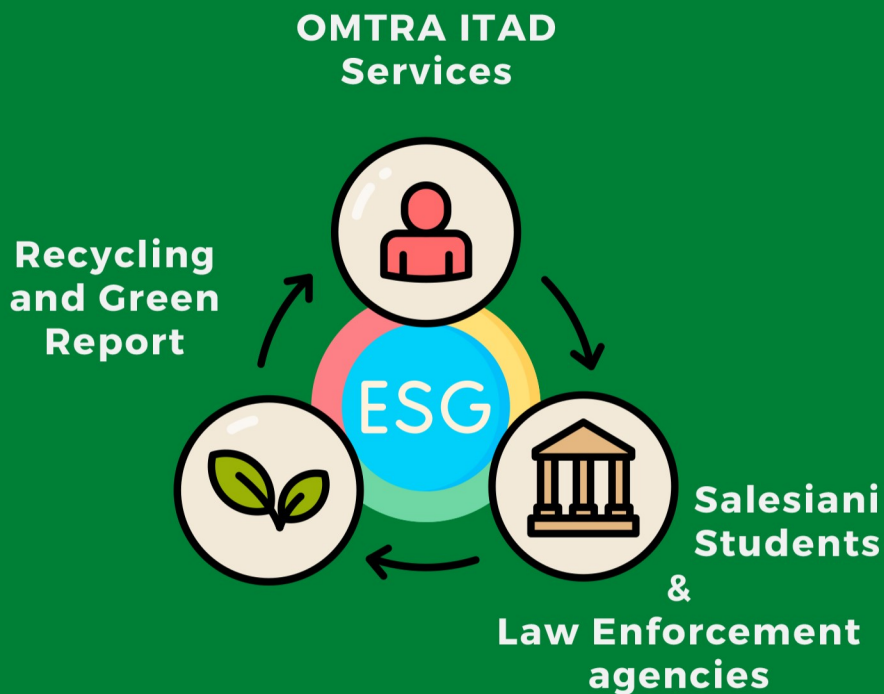
## A COMMITMENT TO THE FUTURE

- We are passionately engaged for a sustainable future to improve the **economic, social and environmental well-being of the surrounding communities.**
- We are "**gas-free**", **plastic free** and have projects to become energy independent in the near future.
- We offer **sustainability consultancy** for impact measurement and certifications (B Corp, EcoVadis, ecc.)



# Reuse and donation of PCs:


Attention to the surrounding community



- OMTRA purchases corporate PCs and phones, deletes their data with certified software, and **donates 1 out of 20 devices** to the **Salesian Schools** in Arese or **Law Enforcement Agencies**.
- A **Circular Economy** process as the device returns to being a tool for study/work, or is recycled - meaning it is no longer waste and becomes easier to manage.
- Destroying obsolete electronic equipment is costly and may have **negative environmental impact**, while this opportunity generates revenue and helps communities,
- This way, companies can support **law enforcement agencies** and **schools** by **donation**, giving a concrete sign of appreciation for their valuable work and support.




# WORKING TOGETHER WORKS

 +39 026642951

 [www.omtra.com](http://www.omtra.com)

 [direzione@omtra.com](mailto:direzione@omtra.com)

 Operational facility: Via Nerviano, 31 - 20045 Lainate (MI)  
Legal headquarters: Via Generale Gustavo Fara, 39 – 20124 Milano